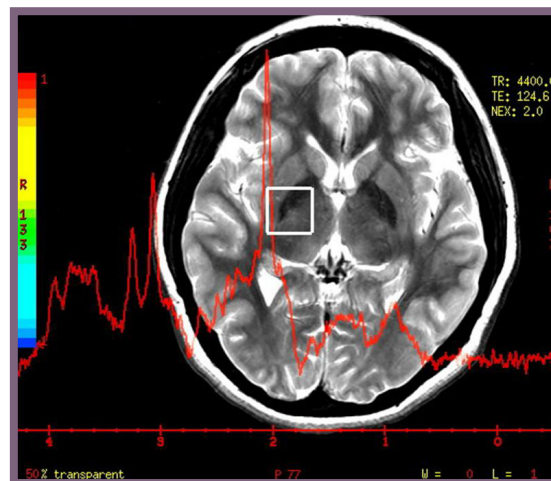




NEURORADIOLOGY

Radia provides 24/7/365 neuroradiology subspecialty interpretation by board certified and subspecialty credentialed neuroradiologists. With a combined experience of more than 100 years, Radia's neuroradiology physicians offer the full spectrum of neuroimaging interpretation, including the most advanced clinical technologies - many of which are not available elsewhere in the Pacific Northwest.

- One or more subspecialty trained and certified neuroradiologists are working 24/7/365.
- A neuroradiologist is available 24/7/365 to consult with physicians and other members of the patient care team on the optimal exam for the individual patient.
- Our team monitors MRI cases in real time to ensure the right study is being done the first time.
- With Radia's integrated 3D Lab, neuroradiologists provide the highest level of neuroimaging for stroke, dementia, MS, movement disorders, epilepsy, brain tumors (gliomas and extrinsic tumors) and all other disorders of the central nervous system.
- Radia neuroradiologists are involved in NIH funded research and development with extensive publications in peer-reviewed journals.



Some Specific Areas We Can Offer Expertise

- Stroke CT and MRI, including 24/7/365 perfusion imaging
- 3T Neuroimaging
- Dynamic Susceptibility Contrast Imaging
- Dynamic Contrast Enhanced Imaging
- Whole brain volumetrics, including normalization to the ADNI data set
- MR spectroscopy
- Diffusion tensor imaging, including applications in tumors, traumatic brain injury and multiple sclerosis
- Functional brain MRI
- CSF flow dynamics
- Myelography

RADIA® and **RADIA**™ are trademarks owned by Radia Inc., P.S.